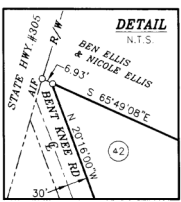


NOTE:
ANGLE IRONS SET ON ALL CORNERS, UNLESS OTHERWISE NOTED.
REBAR SET AT PC'S AND PT'S ON ROADS.

CALL TABLE		
Course	Bearing	Distance
1	Rad. 22848.52'	Arc. 92.23'
	Ten. 46.15'	CA. 071.58'
	Chg. S. 66°41'08" E	82.29'
2	Rad. 22848.52'	Arc. 92.23'
	Ten. 47.51'	CA. 071.14'
	Chg. S. 66°55'10" E	Arc. 92.45'
3	Rad. 7629.44'	Arc. 48.24'
	Ten. 48.24'	CA. 043.58'
	Chg. S. 65°49'44" W	Arc. 48.42'
4	Rad. 7629.44'	Arc. 48.24'
	Ten. 247.89'	CA. 343.54'
	Chg. S. 65°03'38" W	Arc. 48.51'
5	Rad. 7629.44'	Arc. 48.24'
	Ten. 1627.02'	Arc. 59.88'
	Chg. N. 141°17'41" W	CA. 208.08'
6	Rad. 7629.44'	Arc. 48.24'
	Ten. 81.90'	CA. 162.81'
	Chg. N. 12°38'05" W	Arc. 152.44'
7	Rad. 2914.79'	Arc. 117.38'
	Ten. 2914.79'	CA. 216.28'
8	Rad. 2914.79'	Arc. 117.38'
	Ten. 56.70'	CA. 117.37'
	Chg. N. 69°44'00" E	Arc. 108.04'
9	Rad. 2914.79'	Arc. 117.38'
	Ten. 102.01'	CA. 179.29'
	Chg. N. 68°23'21" E	Arc. 200.00'
10	Rad. 2914.79'	Arc. 117.38'
	Ten. 76.24'	CA. 122.98'
	Chg. N. 65°52'41" E	Arc. 59.99'
11	Rad. 2914.79'	Arc. 117.38'
	Ten. 144.36'	CA. 073.86'
	Chg. N. 65°47'59" E	Arc. 88.72'



LAND DISTURBING ACTIVITY NOTE:
AMERICAN FARM PROPERTIES, INC. PLANS NO LAND DISTURBING ACTIVITY, AND NO SOIL EROSION PLAN HAS BEEN PREPARED FOR THIS DIVISION OF PROPERTY.
PURCHASERS OF TRACTS SHOWN ON THIS PLAT ARE RESPONSIBLE FOR ANY LAWS OR ORDINANCES GOVERNING LAND DISTURBING ACTIVITY AND SHOULD CONSULT WITH LOCAL GOVERNING AUTHORITY PRIOR TO ANY LAND DISTURBING ACTIVITY.

NOTE: THIS PLAT HAS BEEN REVIEWED AND APPROVED BY THE BOARD OF COMMISSIONERS OF BURKE COUNTY.

William J. Davis
COUNTY BUILDING OFFICIAL

- NOTES:
1. THIS SURVEY WAS PERFORMED WITH A TOPCON QTS-303 TOTAL STATION AND A 100' STEEL TAPE.
 2. THE FIELD WORK REQUIRED TO PREPARE THIS PLAT HAD A CLOSURE PRECISION OF ONE FOOT IN 13,751 FEET AND AN ANGULAR ERROR OF 00'00"00" PER POINT AND WAS ADJUSTED BY LEAST SQUARES.
 3. THIS PLAT HAS A CLOSURE PRECISION THAT EXCEEDS ONE FOOT IN 120,000 FEET.

File No. 2140
Hour Filed 10:00 AM
Date Filed 7-10-07
Debra A. Laddman
Deputy Clerk Superior Court
Burke County, Georgia



PLAT OF
KEYSVILLE FARMS
PREPARED FOR
AMERICAN FARM PROPERTIES, INC.

PROPERTY LOCATED IN THE 59th, G.M.D.
BURKE COUNTY, GEORGIA
Scale: 1" = 300'
JULY 10, 2007
Prepared by
STEVE BARGERON & ASSOCIATES
WAYNESBORO, GEORGIA (706)664-2882 MAP 16 PAGE 5'

- LEGEND
1. IFF - IRON PIPE FOUND
 2. IFS - IRON PIPE SET
 3. AF - ANGLE IRON FOUND
 4. AIS - ANGLE IRON SET
 5. CTF - CORNER TOP PIPE FOUND
 6. CMF - CONC. MONUMENT FOUND
 7. CMS - CONC. MONUMENT SET
 8. RBF - REBAR FOUND
 9. RBS - REBAR SET
 10. SQIF - SQUARE IRON FOUND
 11. OTF - OPEN TOP PIPE FOUND
 12. RRI - RAILROAD IRON
 13. CSS - COTTON SPIKE SET
 14. CSF - COTTON SPIKE FOUND
 15. F - FENCE
 16. --- FLOOD HAZARD

DRAINAGE & UTILITY EASEMENTS
FRONT LOT LINES: 25'
SIDE LOT LINES: 15'
REAR LOT LINES: 15'

MINIMUM SETBACK REQUIREMENTS
ALONG COUNTY ROAD R/W: 70'
SIDE LOT LINES: 30'
REAR LOT LINES: 50'